

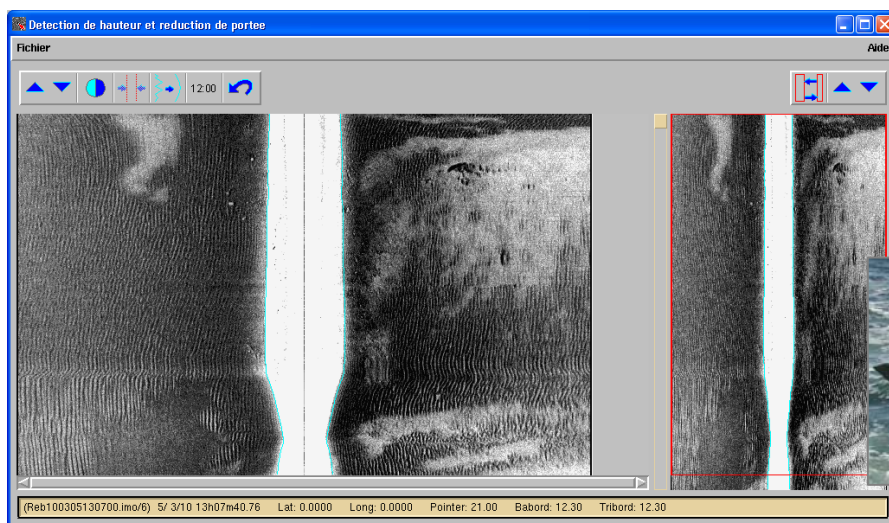
The new 3.6 version

The new 3.6 version is now available on the CARAIBES web site :

http://www.ifremer.fr/fleet/equipements_sc/logiciels_embarques/caraibes/v3.6/download.htm.

This version (for 32 and 64 bits Operating Systems) includes major evolutions :

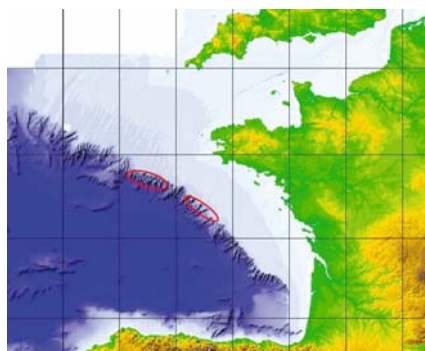
- Enhancement of Atlas DS-3 sounders processing including Backscatter (with .sni files) and SVP processing from SBD (Eiva format) and [ASD \(ATLAS format\)](#) files.
- New interface for Klein-3000



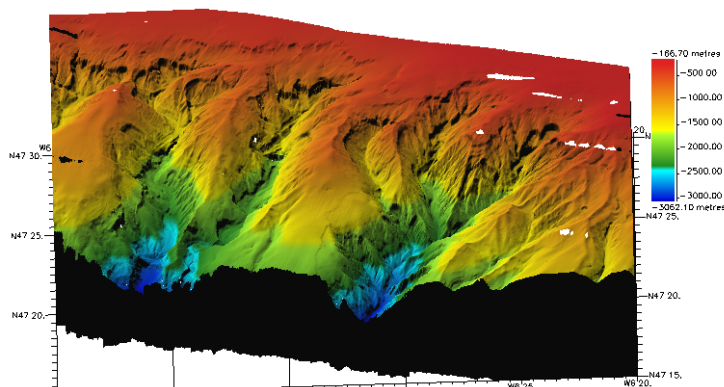
Tow-fish in operation

Lines from Rebent cruise – Klein 3000 Low frequency

- Improvement of Tm7125 interface (MBES on ROV Victor 6000)
 - bathymetry : new 7027 datagram,
 - backcatter : new 7028 datagram.
- Improvement of TechImp module to process sensors : EM302 and ME70 single beam, Thermosalinometer, ...
- New GIS interface under 3D viewers.
- Integration of EM122, EM302, EM710, SB7111 and SB7150 MBES coverages under PreCouv module.
- New tide prediction algorithm in collaboration with SHOM.
- Improvement of Mosaic module including new compensation tables for Mosaicing (EM122, EM302, ...) and overlapping.



Location of BobGeo surveys – [Pourquoi pas?](#)
MBES Reson 7150 24 kHz



High resolution DTM – grid step : 20 meters
By courtesy of [CoralFish project](#) & JF Bourillet

Contact

Département Navires et Systèmes Embarqués - NSE
Centre de Brest - BP 70 - 29280 Plouzané - France
phone : 33 (0)2 98 22 41 83 - fax : 33 (0)2 98 22 45 46
email : nse@ifremer.fr - Web : <http://www.ifremer.fr/flotte>

email : caraibes-assistance@ifremer.fr

Web : www.ifremer.fr/caraibes



The Emodnet project : Hydrography lot of the preparatory actions for European Marine Observation and Data Network, “Emodnet-hydrography” project.

The EC/DG Mare pilots preparatory actions for defining an operational European Marine and Data Network. One lot of these preparatory actions concerns the hydrographic data. General presentation of the project and the partners : www.emodnet-hydrography.eu

Specific objectives of the hydrography lot are to :

- collate existing data from public and private organizations relating to the state of maritime basins; processing them into interoperable formats which includes agreed standards, common baselines or reference conditions;
- assessing their accuracy and precision and assembling them into common datasets.

Ifremer, as coordinator of the Western Mediterranean region (with SHOM, IEO, CNR, Unep as partners) has produced a quarter a minute grid based on accessible data. The processing of this grid refers to common DTM specifications and includes specifics QA/QC layers defined by the partners.

CARAIBES software development were needed for producing the required layers :

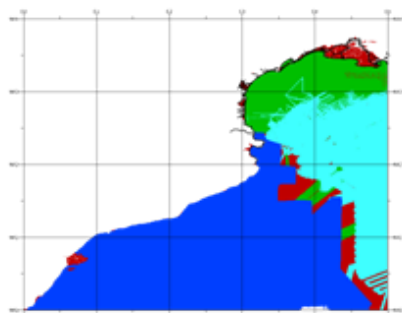
- QA/QC layers as standard deviation, number of soundings by cell, min/max/mean soundings by cell, smoothed depth
- Id of the most abundant dataset by cell, which indicates the data source and its metadata and links each grid node to data center.

Such development of CARAIBES are made in a general effort of providing metadata and quality indicator associated to the processed gridded data.

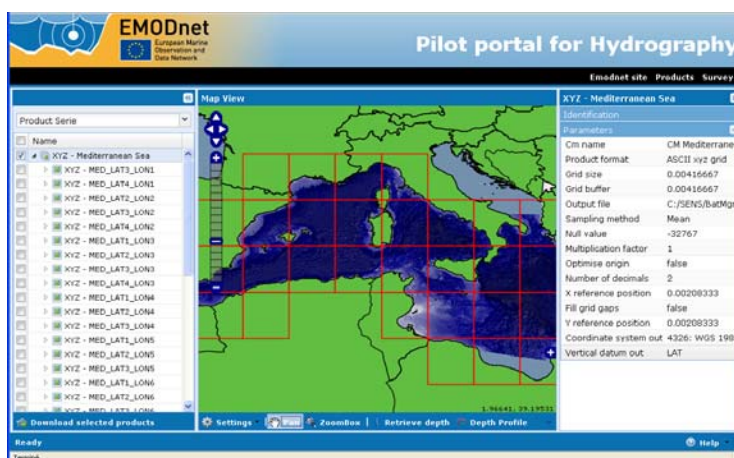
Several modules have been updated :

- all importation modules : introduction of CDI input value,
- Mailla : new option to build DTM compliant to Emodnet requirements (new layers, ...),
- InvMnt : new item to build DTM according to Emodnet requirements and extract CDI values
- MntAsc : new option to export DTM to ASCII file with CDI column.

The DTM/MOS files are CF-Compliant.



Location of CDI



Pilot portal

News small items

- New CARAIBES users : university of La Rochelle, university of Cadiz, university of Aberdeen, GIS Posidonie, GKSS, ...

Contact

Département Navires et Systèmes Embarqués - NSE
Centre de Brest - BP 70 - 29280 Plouzané - France
phone : 33 (0)2 98 22 41 83 - fax : 33 (0)2 98 22 45 46
email : nse@ifremer.fr - Web : <http://www.ifremer.fr/flotte>

email : caraiibes-assistance@ifremer.fr

Web : www.ifremer.fr/caraibes